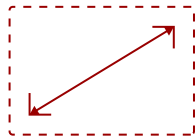


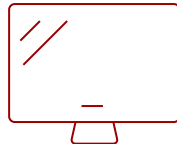
## LS560WH - 3,000 ANSI LUMENS WXGA LED BUSINESS/EDUCATION PROJECTOR

### Key Features

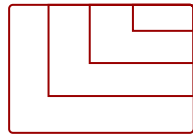
- Bright 3000 Lumens WXGA LED projector with 0.49 short throw lens and advanced visual features
- Latest LED technology provides an extended lifespan of up to 30,000 hours
- 1.1x optical zoom, 4 corner adjustment, 40-degree H/V keystone and 360 degree projection
- This projector can be configured to automatically turn on and off
- Schedule, and manage the projector remotely with Crestron, AMX, Extron, PJ Link, ATEN, and ViewSonic's vController
- Supports most media players, PCs, Macs, and mobile devices with inputs such as HDMI, USB, Ethernet LAN



30 - 300 in. / 0.76 - 7.62 m  
**DISPLAY**



**PANEL**



VGA(640 x 480) to FullHD(1920 x 1080)  
**RESOLUTION**



- x1 HDMI 1.4
- x1 USB 2.0 Type-A
- x1 LAN (RJ45)
- x2 Audio In/Out
- x1 RS232



- Fixed Optical Zoom
- Up to 30,000 Hour Lamp Life

**FLEXIBLE CONNECTIVITY**  
for your favorite devices

### Product Description

The ViewSonic LS560WH short throw projector is ideal for both education and enterprise environments. Powered by lamp-free LED technology, this high-brightness projector can produce 3,000 ANSI lumens so that images and presentations can be easily viewed in environments with strong ambient light. Treat your audience to spellbinding presentations with vivid colors thanks to a wide color gamut. An eco-friendly, lamp-free design reduces maintenance and dramatically lowers your total cost of ownership, while a 0.49 short throw lens can create a 100" screen from just 3.6 ft. away. Enjoy convenient features like instant power on/off, image correction, flexible setup and so much more. This projector comes equipped with comprehensive LAN control for compatibility with Crestron, AMX, Extron, PJ Link, ATEN and ViewSonic® vController systems.

### Specifications

<b>UPC</b>	766907018127
<b>Light Source</b>	DLP LED
<b>Display Resolution</b>	WXGA (1280x800)
<b>Display Resolution</b>	1280 x 800
<b>Brightness (Lumens)</b>	3,000 LED (2,000 ANSI)
<b>Screen Size</b>	30 - 300 in. / 0.76 - 7.62 m
<b>Throw Distance</b>	0.63m-1.58m (87"@0.92m)
<b>Throw Ratio</b>	0.49
<b>Keystone</b>	Vertical (+/- 40°) / Horizontal (+/- 40°)
<b>Lens</b>	Fixed Zoom
<b>Light Source (watt)</b>	RGB LED
<b>Light Source Life, Normal (hours)</b>	30000
<b>Color Depth</b>	1.07 Billion Colors
<b>Dynamic Contrast Ratio</b>	3,000,000:1
<b>Aspect Ratio</b>	16:10
<b>Input Lag</b>	37ms
<b>Frequency Horizontal</b>	15K~102KHz
<b>Frequency Vertical</b>	23-120Hz
<b>PC Resolution (max)</b>	VGA(640 x 480) to FullHD(1920 x 1080)
<b>Mac® Resolution (max)</b>	480i, 480p, 576i, 576p, 720p, 1080i, 1080p
<b>USB 2.0 Type A</b>	1
<b>Ethernet LAN (RJ45)</b>	1
<b>3.5mm Audio Out</b>	1
<b>3.5mm Audio In</b>	1
<b>Control (RS232)</b>	1
<b>HDMI 1.4 (with HDCP 1.4)</b>	1
<b>Internal Speakers</b>	2W (x1)
<b>Voltage</b>	100-120V+/- 10%, 50/60Hz
<b>Consumption (typical)</b>	229W
<b>Stand-by</b>	<0.5W
<b>Physical Controls</b>	Keypad, Power key
<b>On Screen Display</b>	Display, Image, Power Management, Basic, Advanced, System, Information (See user guide for full OSD functionality)
<b>Temperature</b>	32-104° F (0 - 40° C)
<b>Kensington Lock Slot</b>	1
<b>Net (lbs)</b>	6.2

<b>Gross (lbs)</b>	8.3
<b>Net (kg)</b>	2.85
<b>Gross (kg)</b>	3.95
<b>Packaging (in.)</b>	11.5 x 8.7 x 4.5
<b>Physical (in.)</b>	15.2 x 11.8 x 7.4
<b>Packaging (mm)</b>	293 x 221 x 115
<b>Physical (mm)</b>	365 x 300 x 188
<b>Regulations</b>	cTUVus
<b>Package Contents</b>	Projector, power cable, remote control, Quick Start Guide
<b>Warranty</b>	Three-year limited warranty on parts and labor, 1-year limited warranty on the light source, 1st year free Express Exchange® service. (One year Express Exchange Service requires product registration).
<b>Recycle/Disposal</b>	Please dispose of in accordance with local, state or federal laws.

UPC: 766907018127



**PROJECTOR PLACEMENT**



**3000 LUMENS**  
and Full HD (1920x1080) Resolution

**Contact Sales**  
[ViewSonic.com](http://ViewSonic.com)  
 888.881.8781  
 email: [salesinfo@viewsonic.com](mailto:salesinfo@viewsonic.com)