

## LS710HD - 4,200 ANSI LUMENS 1080P LASER PROJECTOR

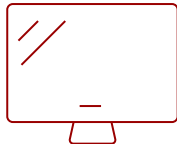
### Key Features

---

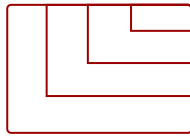
- Long-lasting Laser Phosphor Light Source
- Breathtaking Brightness in any Environment
- Huge Screen Size for Less Cost
- Large Images in Small Spaces
- Setup Made Simple
- 360-Degree Orientation
- Portrait or Landscape Mountable
- Horizontal and Vertical Keystone Correction



40 - 300 in. / 1.0 - 7.6 m  
**DISPLAY**



**PANEL**



VGA(640 x 480) to 4K UHD (3840 x 2160)  
**RESOLUTION**



**IMAGE SIZE AND  
PROJECTOR DISTANCE**

### Product Description

---

Experience multimedia presentations and content in a new light with the ViewSonic® LS710HD projector. Powered by state-of-the-art laser phosphor technology, this lamp-free, high-brightness 1080p projector delivers a stunning 4,200 ANSI lumens so clients and colleagues can view images with pristine clarity even in areas with high ambient light. This eco-friendly projector is designed for enhanced sustainability, so you never have to worry about dealing with toxic mercury or frequent lamp replacements ever again. Experience easy image adjustments and flexible installation options, including short throw ratio, edge blending, H/V keystoneing and four corner projection. An ultra-short throw ratio of .49 empowers you to create immersive 100" movies and shows from just 1.1 meter away. Think bigger and present better with the ViewSonic LS710HD projector.

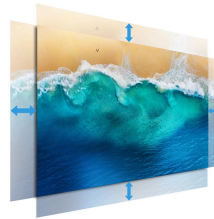
### Specifications

---

<b>UPC</b>	766907019957
<b>Light Source</b>	Laser Phosphor System
<b>Display Resolution</b>	Full HD (1920x1080)
<b>Display Resolution</b>	1920 x 1080
<b>Brightness (Lumens)</b>	4,200 ANSI
<b>Screen Size</b>	40 - 300 in. / 1.0 - 7.6 m
<b>Throw Distance</b>	0.43-3.25m (100"@1.08m)
<b>Throw Ratio</b>	0.49
<b>Keystone</b>	Vertical (+/- 15°) / Horizontal (+/- 15°)
<b>Lens</b>	Fixed Zoom
<b>Light Source Life, Normal (hours)</b>	20000
<b>Light Source Life, Dynamic Eco-Mode (hours)</b>	30000
<b>Color Depth</b>	1.07 Billion Colors
<b>Dynamic Contrast Ratio</b>	3,000,000:1
<b>Aspect Ratio</b>	16:9
<b>Input Lag</b>	37ms
<b>Frequency Horizontal</b>	15K~102KHz
<b>Frequency Vertical</b>	23-120Hz
<b>PC Resolution (max)</b>	VGA(640 x 480) to 4K UHD (3840 x 2160)
<b>Mac® Resolution (max)</b>	480i, 480p, 576i, 576p, 720p, 1080i, 1080p, 4K UHD
<b>USB 2.0 Type A</b>	1
<b>Ethernet LAN (RJ45)</b>	1
<b>3.5mm Audio Out</b>	1
<b>Control (RS232)</b>	1
<b>HDMI 2.0 In</b>	1
<b>HDMI 2.0 (with HDCP 2.2)</b>	1
<b>Internal Speakers</b>	15W (x2)
<b>Voltage</b>	100-240V+/- 10%, 50/60Hz AC
<b>Consumption (typical)</b>	245W
<b>Stand-by</b>	<0.5W
<b>Physical Controls</b>	Keypad, Power key
<b>On Screen Display</b>	Display, Image, Power Management, Basic, Advanced, System, Information (See user guide for full OSD functionality)
<b>Temperature</b>	32-104° F (0 - 40° C)
<b>Kensington Lock Slot</b>	1
<b>Net (lbs)</b>	9.9

<b>Gross (lbs)</b>	14.6
<b>Net (kg)</b>	4.5
<b>Gross (kg)</b>	6.6
<b>Packaging (in.)</b>	19.5 x 7.7 x 15.2
<b>Physical (in.)</b>	13.3 x 10.4 x 5.2
<b>Packaging (mm)</b>	496 x 195 x 387
<b>Physical (mm)</b>	337 x 265 x 131.5
<b>Regulations</b>	cTUVus
<b>Package Contents</b>	Projector, power cable, remote control, Quick Start Guide
<b>Warranty</b>	Three-year limited warranty on parts and labor, 1-year limited warranty on the light source, 1st year free Express Exchange® service. (One year Express Exchange Service requires product registration).

UPC: 766907019957



**INSTALLATION FLEXIBILITY**  
with wide H/V lens shift

**Contact Sales**  
[ViewSonic.com](http://ViewSonic.com)

888.881.8781 ☎  
email:  
[salesinfo@viewsonic.com](mailto:salesinfo@viewsonic.com)