

FABULUX LED
MAKING FABULOUS PRODUCTS



PTF Series

Better performance, better size, better choice



● lower carbon emission, more green!

- Stable and reliable operation
- Self-contained heat dissipation, no need to install other heat dissipation equipment.
- Green energy saving



● Superior structural design

- Die-casting Aluminum module and cabinet, for seamless installation and fast heat radiation.
- Both totally front and rear service, easy for installation.
- Simple design with hidden cables.



● Ultra high protection



Fire rating up to 5VB,
Fearless in outdoor environments.

- The module adopts side waterproofing method to ensure the flatness of the module.

- The module adopts two layers of waterproofing, improving the waterproof performance of the module.



Significantly improved protection, with Ip66 waterproofing.

● Lightweight cabinet for quick and easy installation.

Lightweight Cabinet **27kg/m²**

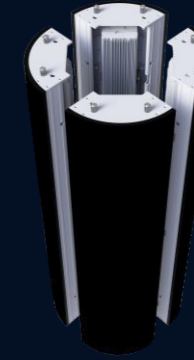
Cabinet Thickness **81.5mm**



● Perfect rounded corners

PTF + VR

Perfect seamless corner cabinet for naked-eye 3D solution.



● Specifications

Model name	FAB-PTF3.9	FAB-PTF4.8	FAB-PTF5.9	FAB-PTF6.2	FAB-PTF8.3	FAB-PTF10.4
Pixel Pitch (mm)	3.91	4.81	5.95	6.25	8.33	10.41
Pixel Density (dot/m ²)	65,536	43,264	28,224	25,600	14,400	9,216
LED sealing Type	SMD1921	SMD1921	SMD1921	SMD2727	SMD2727	SMD2727
Module Resolution (PX* PX)	128*64	104*52	84*42	80*40	60*30	48*24
Module Size (mm * mm)	500*250	500*250	500*250	500*250	500*250	500*250
Module Weight (kg)	1.7	1.7	1.7	1.7	1.7	1.7
Module Thickness	20mm	20mm	22mm	22mm	23mm	25mm
Contrast Ratio	5,000:1	7,000:1	10,000:1	10,000:1	10,000:1	10,000:1
Drive Mode:	Constant Current					
Horizontal Viewing Angle (Deg)	160					
Vertical Viewing Angle (Deg)	Upward viewing angle 30° Down viewing angle 60°		Upward viewing angle 20° Down viewing angle 50°			
Brightness (cd/m ²)	5,000-7,000			6,000-9,000		
Grey Scale (bit)	14-16					
Refresh Rate (Hz)	3,840					
Max Power consumption (W/m ²)	580W±3%/m ²	540W±3%/m ²	540W±3%/m ²	550W±3%/m ²	550W±3%/m ²	550W±3%/m ²
Average Power consumption (W/m ²)	174W/m ²	162W/m ²	162W/m ²	165W/m ²	165W/m ²	165W/m ²
Cabinet Size (mm * mm)	1,000*500/1,000*750/1,000*1000					
Cabinet Weight (Kg)	27kg/m ²					
Cabinet Thickness (mm)	81.5mm	81.5mm	83.5mm	83.5mm	84.5mm	86.5mm
Input Voltage (V)	AC100-240V					
Working Temperature (°C)	-40~+55°C					
Storage temperature range (°C)	-40~+60°C					
Working humidity (RH)	10%~95%RH					
Waterproof Level	IP66					
Working Environment	Outdoor					
Maintenance type	Front/Rear					
Certificates	CE(LVD、EMC),CB,FCC, ETL					